

DRF25-80C Paver		Standard ○/Optional ●
Engine		
DCEC engine, in line with China's National 4 emissions		●
Eco mode		●
Conveyor / Auger system		
Mechanical push roller (swivels left/right)		●
Reversible conveyor		●
On / off controlled conveyor		●
Reversible Auger system		●
Proportionally controlled ultrasonic sensors		●
Hydraulic adjustment of auger height		●
Central lubrication		●
Screed		
Fast screed contact angle adjustment		●
Mechanical Arm Lock		●
Mechanical crown adjustment		●
Hydraulic crown adjustment		○
Central lubrication		●
End plate with 90° fold		●
Electrical system		
HYD drive generator		●
REDLINE Telematic		●
2 x Auger		●
2 Front 2 Rear for sides lights		●
2 x Auxiliary lights		●
24V power supply		●
Spraying system		
Spraying system with hose reel		●
Tractor		
Fixed platform		●
2 seats		●
Control panel slideable		●
Canopy assisted lifting		●
Splited track plate		●
Leveling		
Moba GRADLINE 2		●
Others		
Fire extinguisher		●
Toolbox		●

REDLINE

Highway Crawler Paver



Skillful in technical matters

Constant in quality

Effective

Technological heritage - creating classic products

Constant quality - building brand value

Efficiency and Effectiveness -- Helping Customers Succeed

Dynapac (China) Compaction & Paving Equipment Co.,Ltd.

No.38, Quangwang Road,
Wuqing High Tech Industrial Park, 301700

Visit: www.dynapac.com/cn Office :+86 (0)22 8211 8000
Service hot-line: 400 616 8116 Fax :+86 (0)22 8211 8080



DRF25 - 80C

Simple and intelligent operation with outstanding paving performance

The efficient design of the operating environment combined with high-quality components makes the REDLINE DRF25-80C the perfect partner for a wide range of construction scenarios up to a width of 10 meters. Reliable performance creates excellent paving quality even under severe working conditions.

Working light
To facilitate night operations, six lights are provided at the canopy and two lights for the auger.

Maintenance
Central lubrication system convenience for maintenance.

Material Conveying
Unrivalled in reducing segregation, perfecting every pave.

Mechanical push roller
The push roller integrated pivot function that allows the push roller to swing from side to side, ensuring that it always contacts with the truck wheels to avoid asymmetric load.



Technical Parameters	
Basic width (Tractor)	2.55 m
Working width	2.55 -10 m
Theoretical Productivity	800 t/h
Engine Model	DCEC B5.9CS4 210C
Engine power	154kW @ 2000 rpm
Screed	DRV51 TVE/TE DRV60 TVE/TE DRR30 TVE

Control
Smart monitor the whole paving process in order to achieve excellent paving result.

Ergonomics
The excellent visibility provides an optimal view of the hopper and the entire working area.

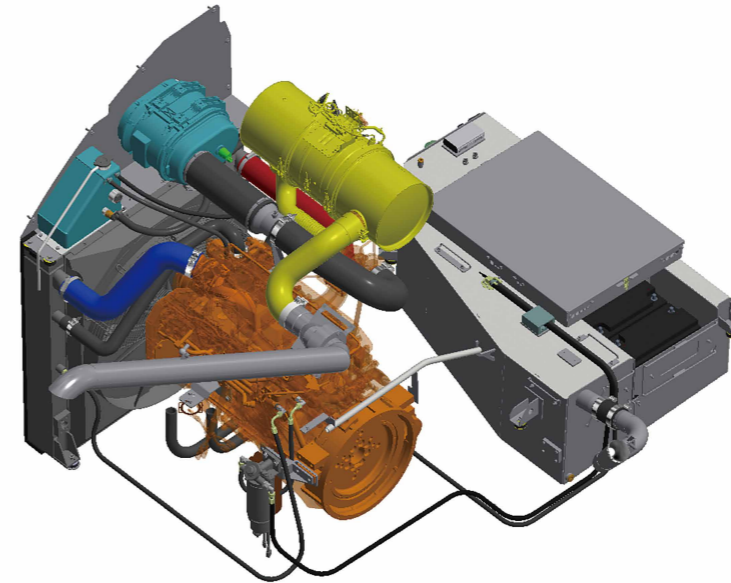
Screed
The first-class leveling control system delivers flawless paving results. The quick-adjust lever allows screed angle adaptation to any layer thickness instantly with easy operation.

Track group
Larger ground contact area delivers superior traction and durability.

Powerful auger system
Center drive, effectively avoiding the segregation. The auger adjust range can reach to 250mm, can always provide the better material conveying.



Optimize the design of engine cooling system to increase the limit working temperature of the whole machine;
Increase the power of hydraulic radiator to lower the whole hydraulic system temperature;

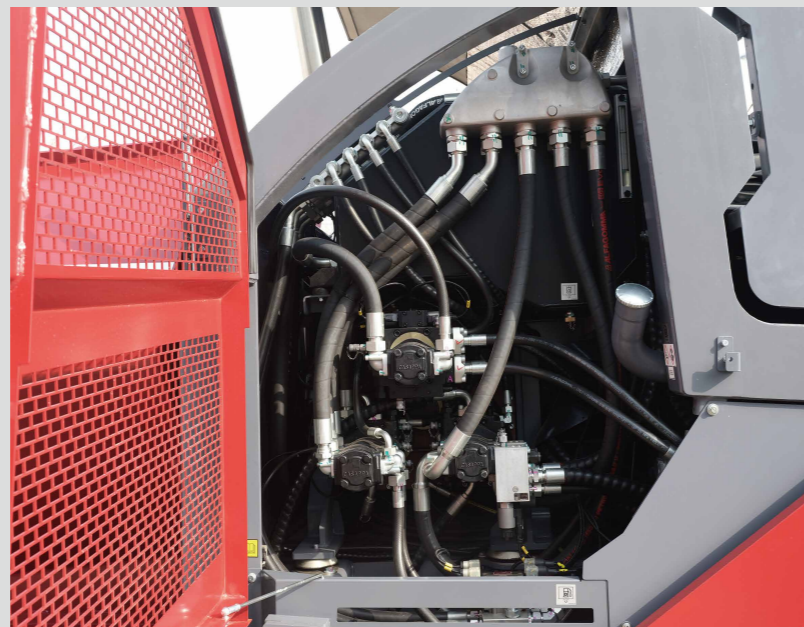


Using DCEC B5.CS IV engine, the aftertreatment does not need to add urea, the system is simple and convenient to use, the source of fault code is less, the customer does not need to worry about the increase of the cost of the later use;

Aftertreatment integrated DOC (oxidation catalyst) + DPF (particulate filter);

Engine integrated EGR (exhaust gas recirculation).

Equipped with left/right grated opening side doors to form a good ventilation tunnel. Optimized design of hot and cold compartments to provide a more comfortable working environment.



Equipped with ECO mode as standard

Depending on the work scenario, the engine speed can be adjusted to the appropriate mode. This mode results in lower fuel consumption, noise, and longer engine lifetime.

The engine speed is set at 1600rpm;
The machine operates efficiently and is suitable for most paving conditions;
Lower fuel consumption and reduced emissions.



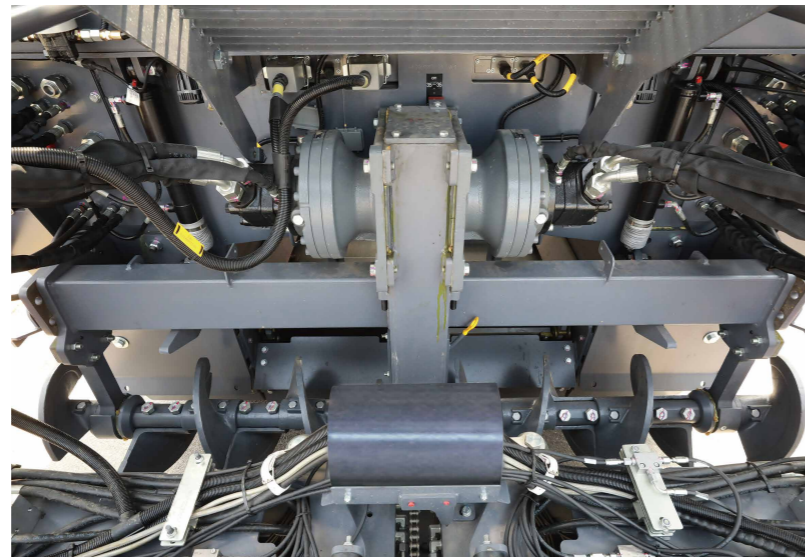


Material Conveying - Hopper

Hopper L x W: 2.65 x 3.4 meters, hopper bottom reinforced 16mm;
Large capacity (17 tons), reducing the frequency of stopping to wait for materials and restarting, effectively reducing the road surface undulation caused by stopping and starting;
Low feeding height (480mm), allowing trucks to easily dump material into the hopper;
The tilting angle design reduces the residual asphalt material and the obstruction of the feed tunnel by the tailgate of the truck.

Powerful auger system

Improved center drive auger conveying with thin gear box to ensure material conveying and prevent segregation;
Both left and right auger controlled and reversible;
Hydraulic auger adjustment as standard, with the range of 250 mm.



Traction

Track wheelbase of 3.36 meters, stable undercarriage and strong traction; Applied classic and reliable reinforced mechanical tensioning devices; Applied cost-effective split track plates with a width of 320 mm for excellent grip performance.



Reinforced push roller

Addition of an outer support system to eliminate the possibility of deformation;
Integrated pivot function that allows the push roller to swing from side to side, ensuring that it is always in contact with the truck wheels to avoid asymmetric load.

Reinforced front flap

Standard with 16mm thick fixed front flap, more suitable for heavy trucks in China;
Conveyor guide plate: front reinforced to prevent extrusion and deformation by trucks.



Side shield control

Adjustment by two handles, wide range of adjustment, applicable to a variety of construction conditions; The 90-degree bending design of the side shield bottom plate perfect every joints.

Eccentric Quick Adjustment Handle

The unique quick-adjust handle allows for quick and easy changes in screed contact angle and thus paving thickness.



Ergonomic workplace

Beside the effective pre-compaction, Dynapac screeds offer excellent accessibility. The lower height gives you a better view of the agitator and allows continuous, real-time control of the material transport, ensuring the work more efficient and safer.



Smart control panels

The control system provides the operator with an ergonomically optimized and layout position. The switches is optimally laid out according to function, cluster and operating frequency. The operation panels are designed to be simple and aesthetically pleasing, and absolutely waterproof and impact resistant.

The functions of traveling, feeding, screed, heating and remote monitoring are controlled by CAN bus control technology, which greatly improves the stability of the system.

The color display integrates the functions of parameter setting and display, fault diagnosis and warning, and operation prompts, which is convenient and effective;

The use of warping board and knob switch, intuitive and easy to understand, and of operation; switches can be replaced individually and also interchangeably, lower cost, simple maintenance.



High-tech four-axis supported floating screed

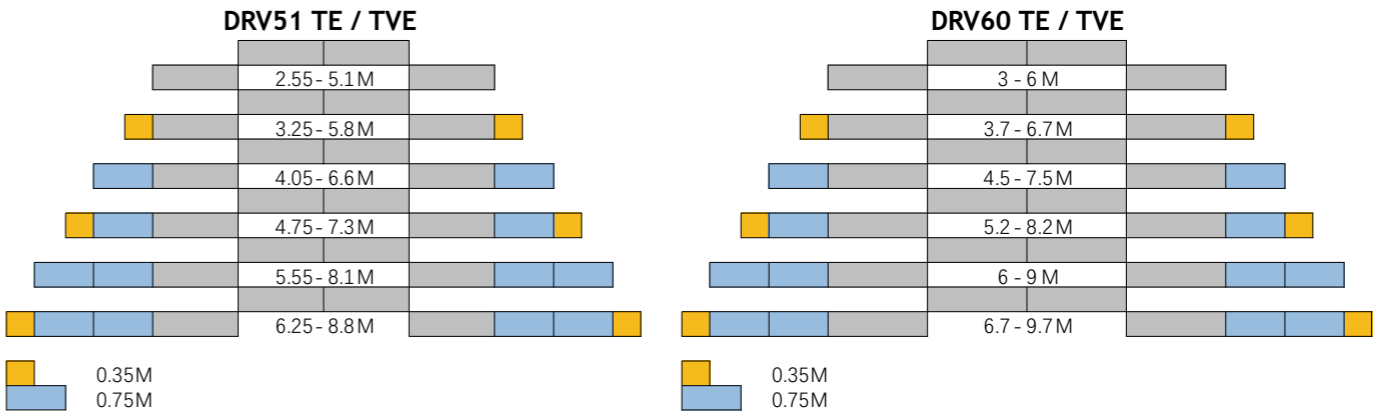
The screed has unrivaled stability based on its own patented four-axis support technology. The four-axis support floating screed requires no tie rods and is superbly resistant to deformation. In the case of large paving width construction, the lower support cylinder only extends halfway, forming two pivot points to ensure the rigidity of the expansion part, so that the screed still has excellent loadability after fully extending, and comprehensively avoids deformation and twisting, thus guaranteeing excellent paving quality, and becoming the necessary choice for high-grade pavement construction.

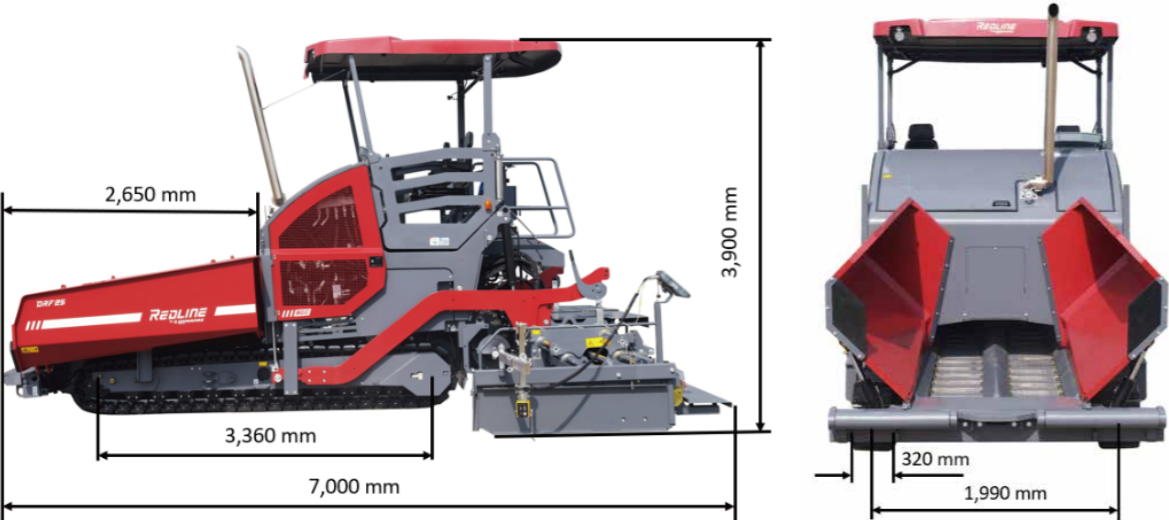
	Hydraulic retractable screed		Mechanical assembly screed
	DRV51 TE/TVE	DRV60 TE/TVE	DRR30 TVE
Base width	2.55 m	3 m	3 m
Hydraulically extendable to	5.1 m	6 m	NA
Heating systems	electronic	electronic	electronic
Maximum working width (with extension)	-	-	-
DRF25-80C	8.8 m	9.7 m	10 m

Electric heating system

Adopting hydraulic driven generator with a power of 30kW
With the optimized layout of the heating bar and heating insulation system, the heat is completely transferred to the screed bottom plate, with simplified structure and low maintenance cost;
The screed bottom plate and tamper bar are both with heating.

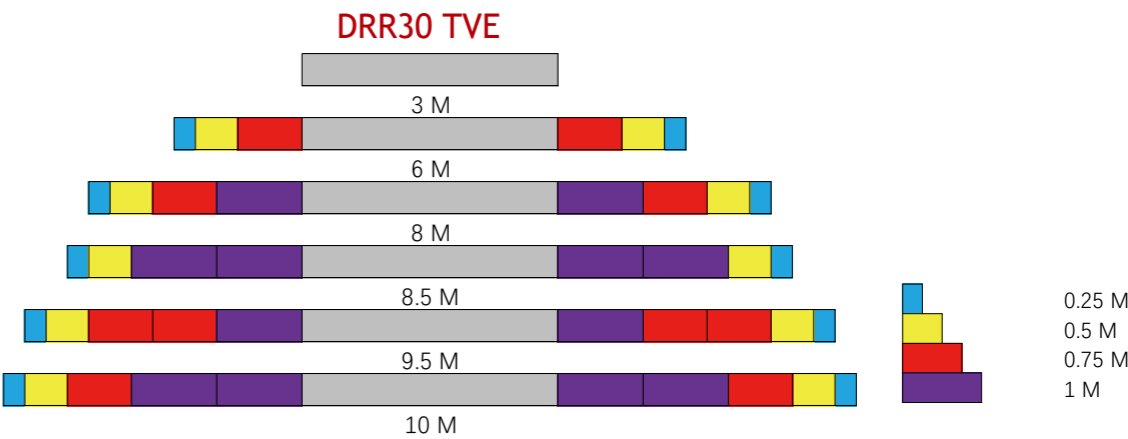
Screed width configuration





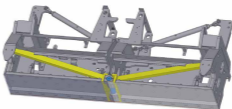
DRF25-80C	
Engine	
Model number	DCEC B5.9CS4 210C
Power / kw@rpm	154kW @ 2000 rpm
Emission Level	CS IV
Fuel tank volume / L	362
Weights	
With DRV60 TVE main screed/t	19.7
Sizes	
Basic width w DRV5 / m	2.55
Basic width w DRV60 / m	3
Maximum working width / m	10
Abilities	
Theoretical productivity / t/h	800
Max paving thickness / mm	500
Negative paving / mm	-150
Tractor	
Track wheelbase / mm	3,360
Track width / mm	320
Climbing ability	13° front / 15° rear
Traction	
Paving speed / m/min	0-26
Travel speed / km/h	0-4
Hopper	
Hopper capacity / t	17
Hopper length (to push roller) / mm	2,650
Hopper opening width / mm	3,400
Dumping height / mm	480
Conveyor	
Type	Double scraper
Control method	on / off
Speed / m/min	0-26
Auger	
Blade diameter / mm	Standard 380, optional 430
Height adjustment range / mm	250
Auger speed / rpm	0-110

Screed width configuration

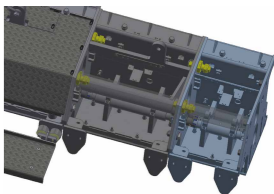


DRR30 Screed

Upgraded screed structure design, stronger anti-deformation ability



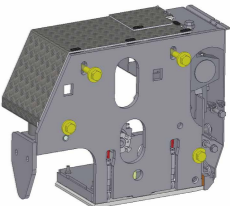
The patented pre-deformation adjustment mechanism ensures optimal performance in both asphalt paving and soil stabilization operations.



Unique torsion beam anti-deformation technology minimizes deformation for better flatness.



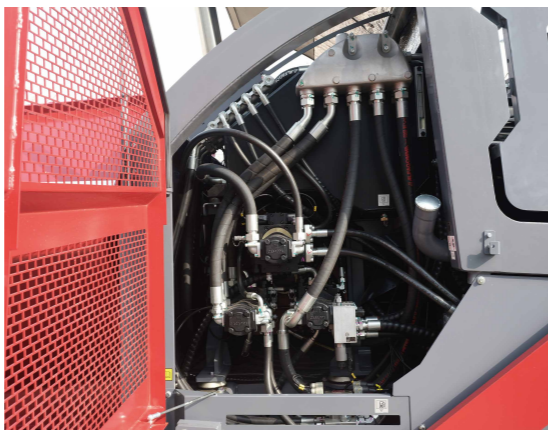
Easy to mount together with just 4 bolts





Accessibility Maintenance

We have cleared the way for you to easily understand maintenance. Components, including hydraulic pumps and tank caps, are straightforward to access and easy to find. After a simple visual inspection of filters and engine components, you can get started quickly. You will benefit from this convenient layout every day.



Quick overhaul from start to end

Our goal is to save you time and money by making servicing easier. We have centralized our maintenance points and made them easily to access. The fuse box is easily accessible from the seat platform for quick replacement. A large number of plug-and-play components also speed up the maintenance process.



fluids and lubricants

- Right fluids as confirmed by product design
- Right size of packing to avoid storage.



Extended warranty policy

- Extended warranty for peace of mind
- Service agreement to ensure higher uptime.



Tailor-made training

- Various training modules geared towards our customer's requirement.



Maintenance kit

- All-in-one box concept for ease of ordering
- Designed to cover full maintenance
- Cost effective as well as easy to plan.



Wear and Repair Kits

- All-in-one box package for ease of ordering
- Right quality at right cost, for minimum cost of operation different options to suit all maintenance.

Reliable After Sales Support solutions

Service Commitment

Services

Genuine accessories and maintenance kits

- Maintenance Kits
- Genuine Filter
- Lubricating Fluids
- Wear parts and repair kits
- Upgrade Kits

Service

- Experienced technical service team
- Training Programs
- Equipment Delivery Inspection/Service Program
- Extended Warranty and Service Agreement

Service Model

Global Distribution Network

24-hour service hotline:
4006168116

Remote Equipment Monitoring System REDLINE Telematic

Manage your equipment and fleet anytime, anywhere Customized monitoring, equipment alarm alerts and timely intervention.

Failure prevention costs

Regularly maintenance

Equipment breakdowns directly affect your work efficiency. Regular maintenance can prevent breakdowns and improve the reliability of your machines, maximizing your productivity and thus increasing your profitability.

Preventive maintenance costs

Maintenance agreements

Customized maintenance packages for your equipment, cost-effective wear parts and repair kits are available for all the parts you need for your equipment's regular maintenance program. Our experienced service technicians come to your facility to prevent equipment breakdowns, and maximize uptime over its working life.

Maintenance agreements

Equipment requires preventive maintenance to avoid breakdowns
Efficient maintenance service ensures high resale value of the equipment.

↓
Reduced occupancy costs
Maintenance avoids costly repairs

👍
Improve equipment reliability
Ensure complete equipment
Effective running time

📈
Higher resale value